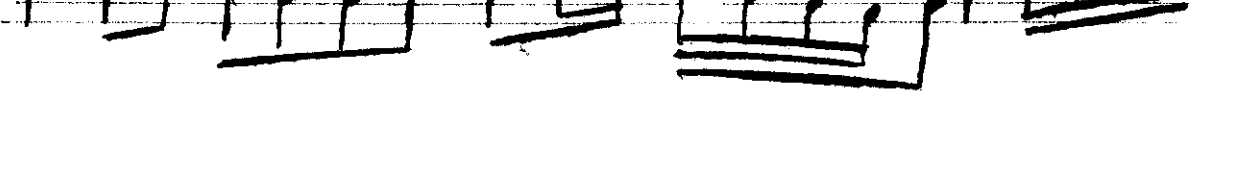
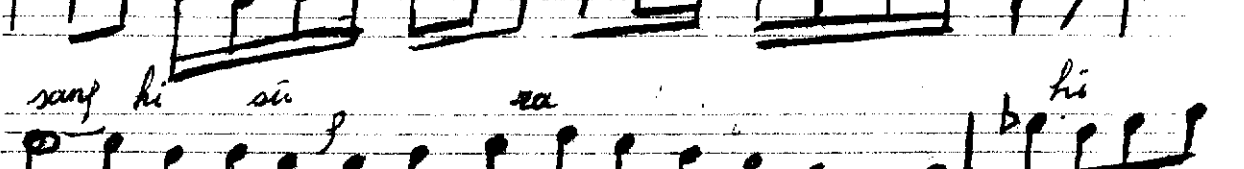
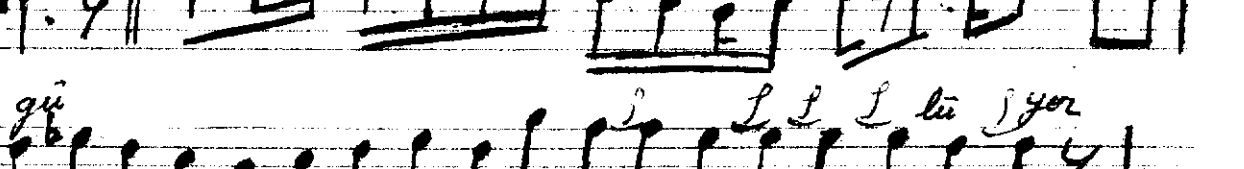
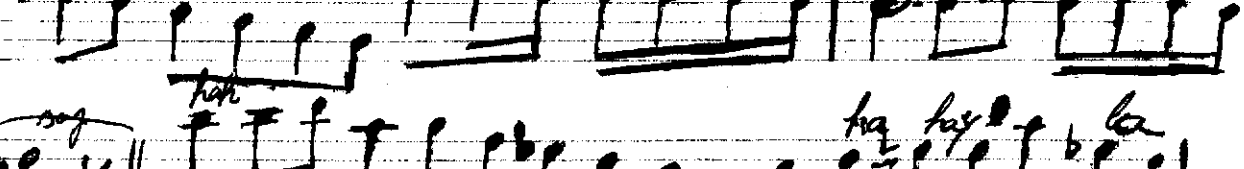
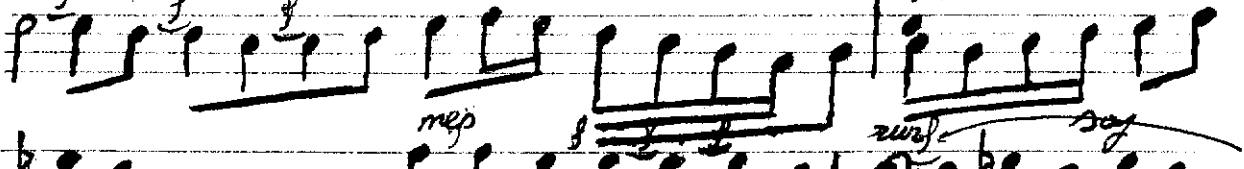
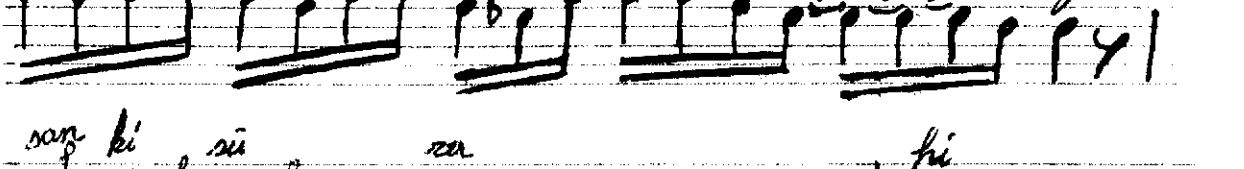
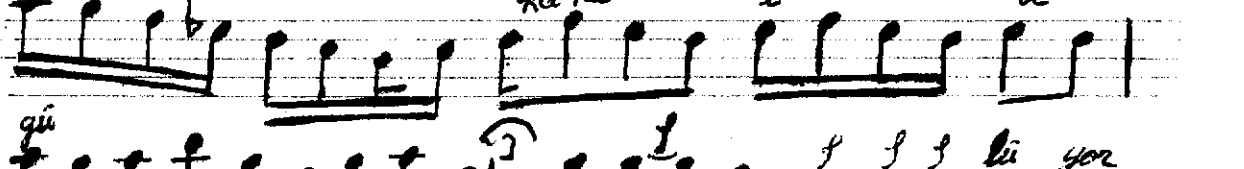
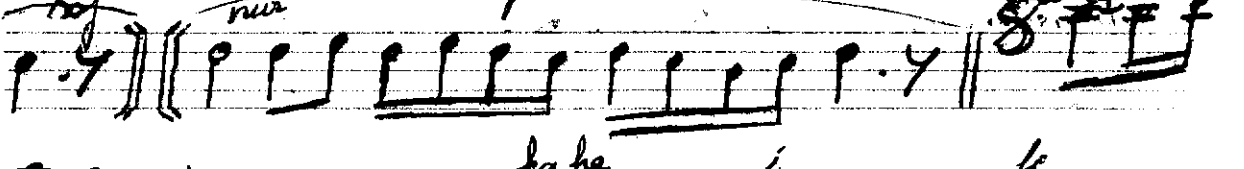
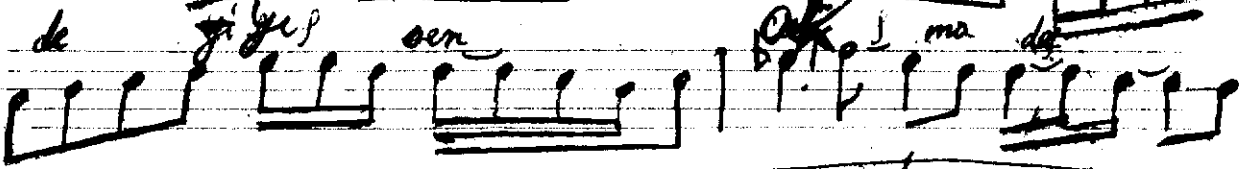
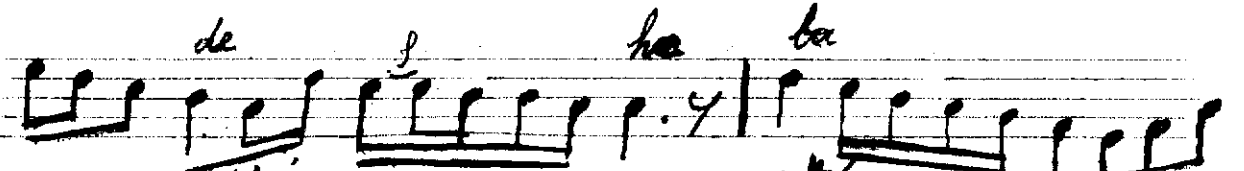
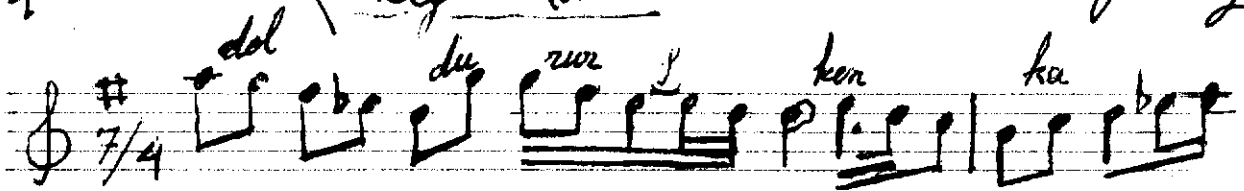


1 Karcipa Sarku Zeri Anz Bey



Handwritten musical score for a song. The score consists of ten staves of music. The first staff has a treble clef and a key signature of one flat (B-flat). The second staff has a bass clef. The third staff has a treble clef. The fourth staff has a bass clef. The fifth staff has a treble clef. The sixth staff has a bass clef. The seventh staff has a treble clef. The eighth staff has a bass clef. The ninth staff has a treble clef. The tenth staff has a bass clef. The lyrics are written below the staves. The music is in a 2/4 time signature. The lyrics are in Turkish. The score is handwritten and includes various musical notations such as notes, rests, and accidentals.

Doldururken kadehe badeyi sen, ahmada nur

Kahkaha ile gülüyor, sanki süroki meorim

Anlaşılmaz bir sihir var, o güzel ellerde

Eller olduğun anda kadehim sarıya olur